

50,000* FAMILIES ARE READY TO SHOP HERE.
ARE YOU READY TO SET SHOP?



PARK
CENTRAL



*Source -www.censusindia.gov.in



Being at the right place at the right time is the only thing that matters. The changing face of Faridabad presents us with one such opportunity.

With more than 2 million people* residing in Faridabad, a state-of-the-art complex with suitable retail and modern office spaces is the need of the hour.

Introducing BPTP Park Central, a once-in-a-lifetime opportunity to be a part of BPTP's iconic development - Parklands.





WHY INVEST?

Park Central is the first-of-its-kind commercial project in Faridabad that boasts of an advanced design coupled with convenient retail and efficient office spaces. Set amidst an impeccably planned high density township, Park Central is the perfect business destination. Strategically located at the heart of Parklands, D block, Sector 85, Park Central is indeed a premium investment opportunity.

KEY FEATURES

- Retail space on lower ground, ground and upper ground floors.
- Office spaces from the 1st to the 3rd floor.
- Equal visibility for all shops and offices.
- A floor comprising of office spaces that come with cubicles and work stations.
- 100% power back-up, high security and monitored parking spaces.
- Low Maintenance Charges.

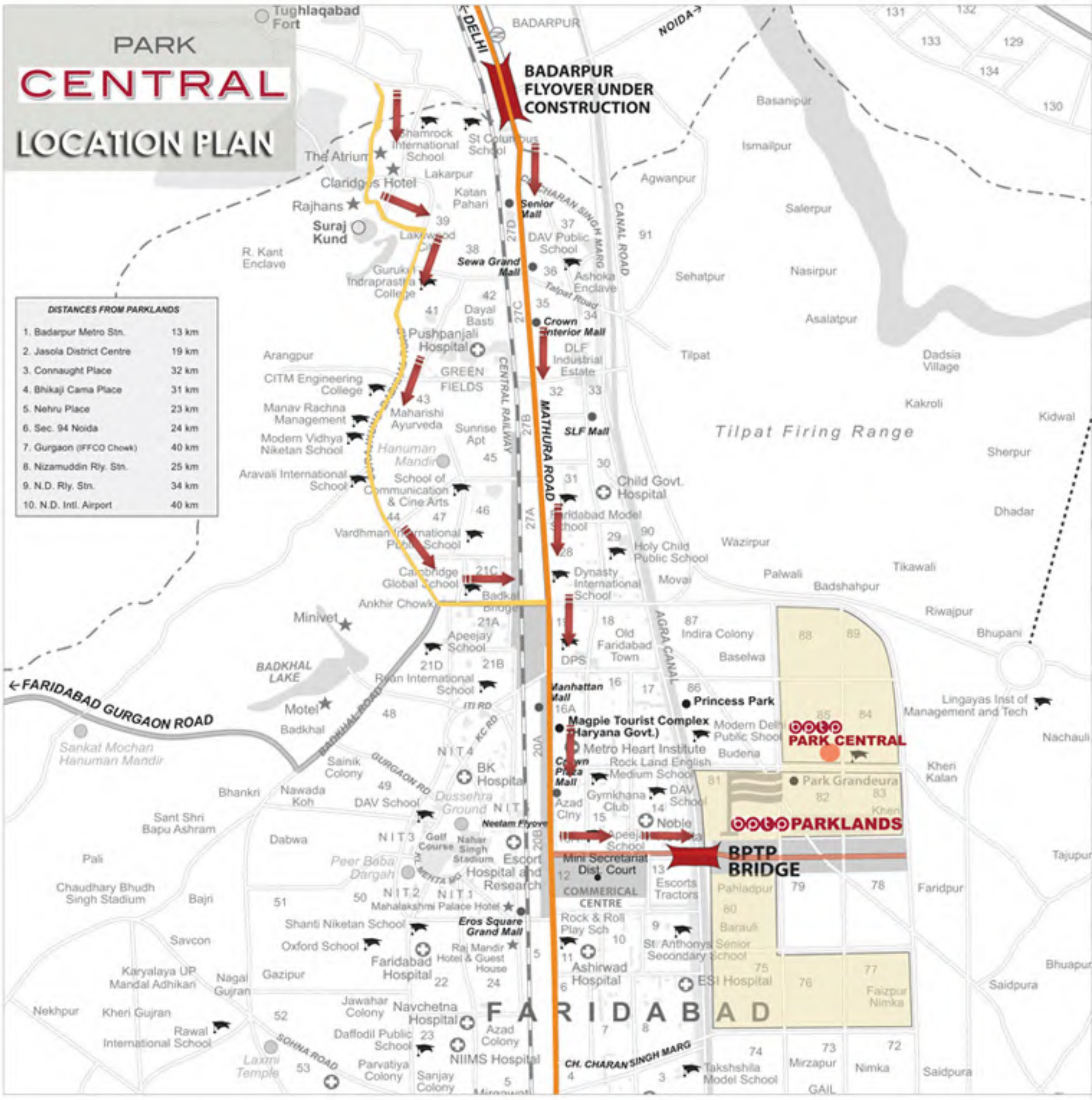
Park Central also boasts of a harmonious amalgamation of work and retail space. The lower ground, ground and upper ground floors are dedicated to retail, whereas top floors home ultra-modern office spaces.



PARK CENTRAL LOCATION PLAN

DISTANCES FROM PARKLANDS

1. Badarpur Metro Stn.	13 km
2. Jasola District Centre	19 km
3. Connaught Place	32 km
4. Bhikaji Cama Place	31 km
5. Nehru Place	23 km
6. Sec. 94 Noida	24 km
7. Gurgaon (IFFCO Chowk)	40 km
8. Nizamuddin Rly. Stn.	25 km
9. N.D. Rly. Stn.	34 km
10. N.D. Intl. Airport	40 km



THE HOT-SPOT

The touted future of the NCR, Faridabad is already making successful progress. With townships, contemporary living standards and state-of-the-art city centres coming up in the area, Faridabad is already witnessing an epic transition. Park Central strategically falls within the vicinity of the most premium location of Faridabad, the D Block of Sector 85. Poised between high-rise buildings and premium residential complexes of Sector 14 and 15, Park Central is just 2 kms from NH-2 and walking distance from major residential developments in the region. It falls in close proximity to the Badarpur Metro Station and boasts of easy connectivity. The Badarpur Flyover further ensures seamless traffic mobility.

SPECIFICATIONS



EXTERNAL FINISHING:

Permanent Finish - Combination of Stone/Tile Cladding & Texture Paint.
Cast Iron/Mild Steel Ornamental Railings (painted). (Corridor/Staircase)
Shop Front - Mild steel Rolling Shutters (painted).



GENERAL PROVISIONS:

100% Power Back-up upto prescribed load with individual sub metering.
Provision for AC shops/offices.
TV Cable/Data & Voice - Telephone point in each shop/office/restaurant.
Raw water supply/Waste water disposal in each shop/office/restaurant.



GENERAL FINISHING:

Foyer/Lobby - Polished Granite/Marble.
Corridor/Verandah - Polished Granite/Marble.
Public Toilets - Fully Finished.



Basement Parking - Fire Protection as per the Bye laws.



FLOORING/ WALL FINISHING:

Shops/Offices/Restaurants - Cement Screed Flooring + Plastered Walls + White Wash.
Central Landscaped Court.
Boundary hedge/MS Railing on low toe wall as per landscape design.



High Speed Elevators.

LOWER
GROUND
FLOOR
PLAN



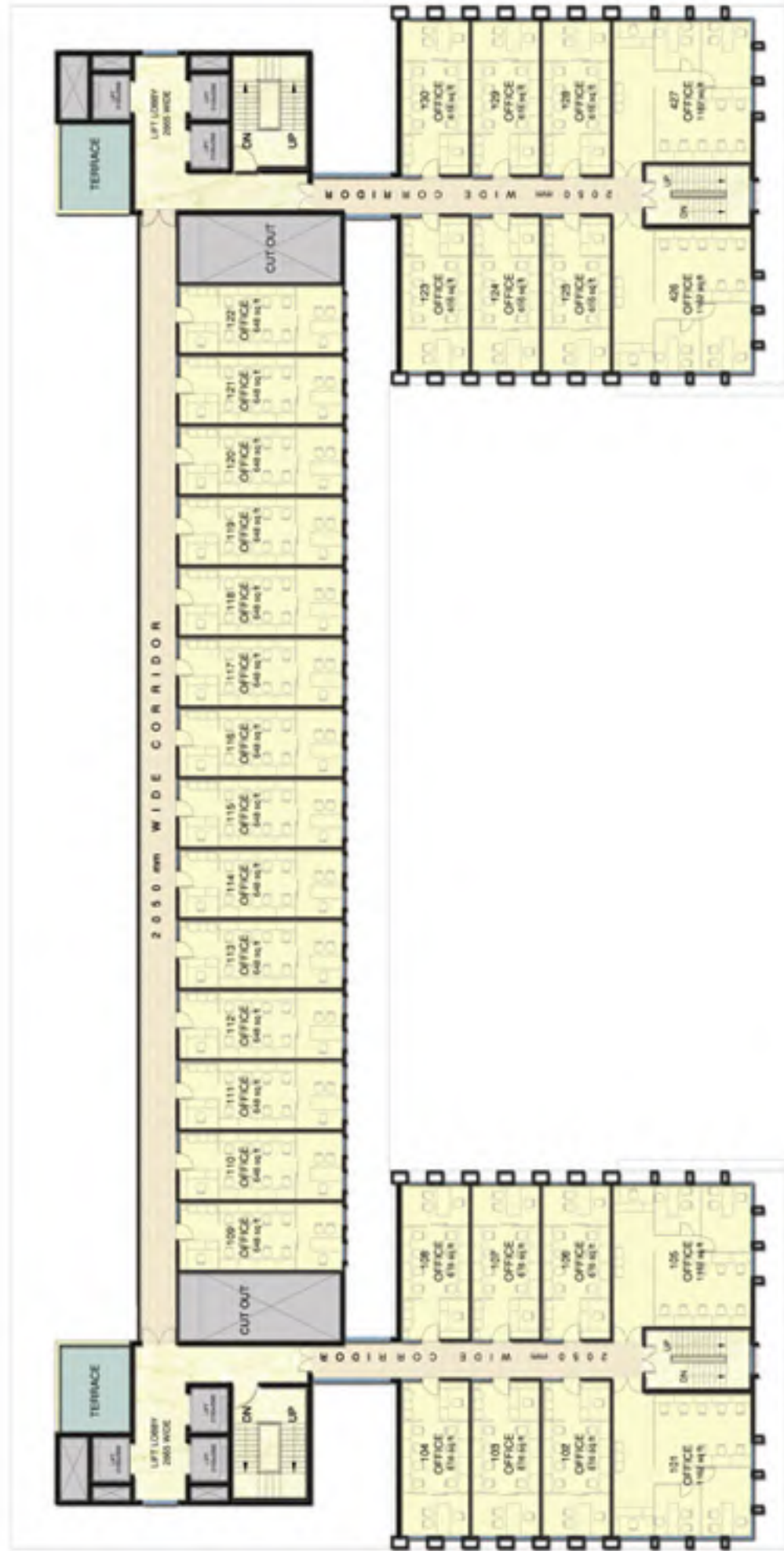
GROUND FLOOR PLAN



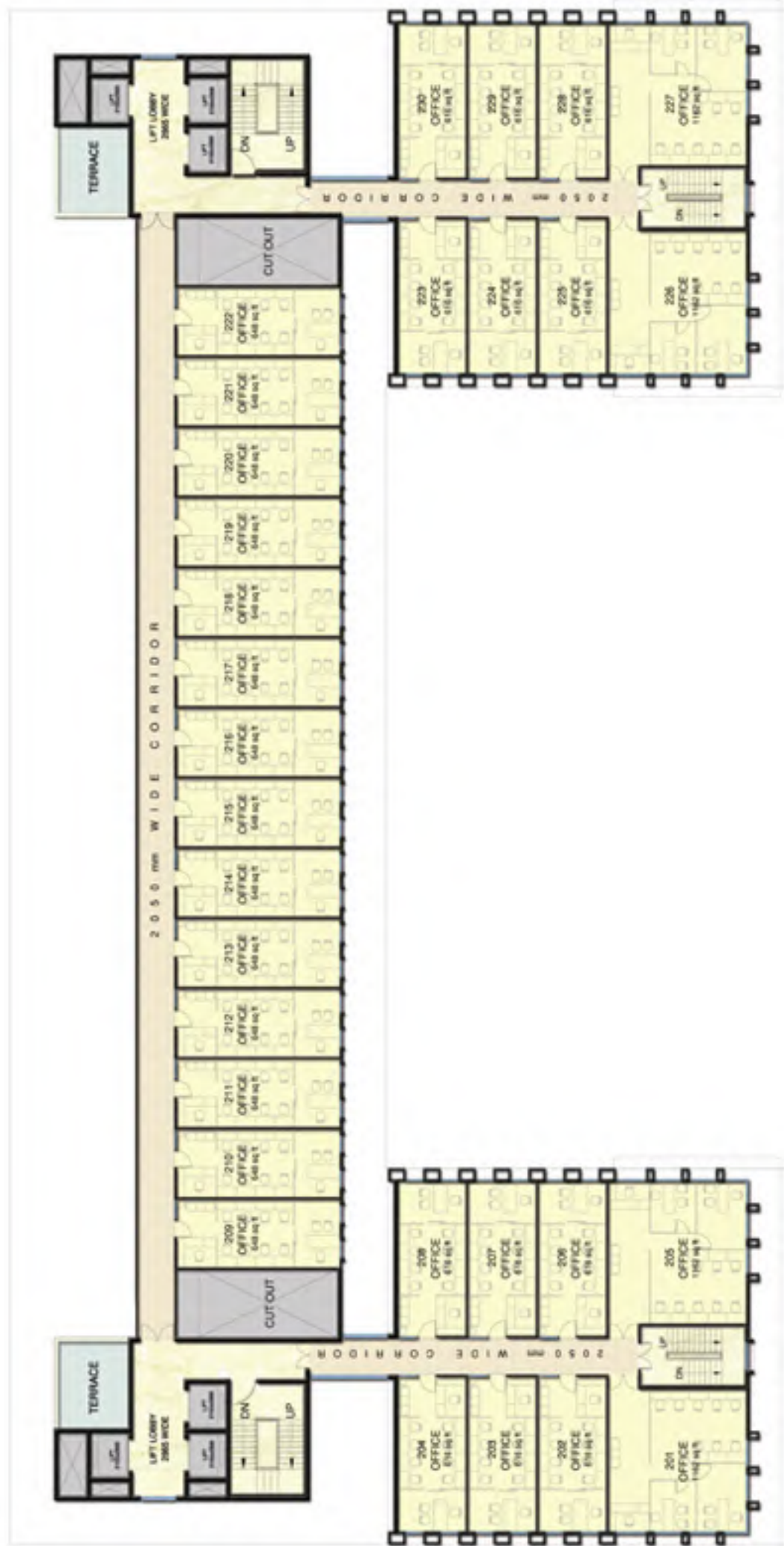
UPPER
GROUND
FLOOR



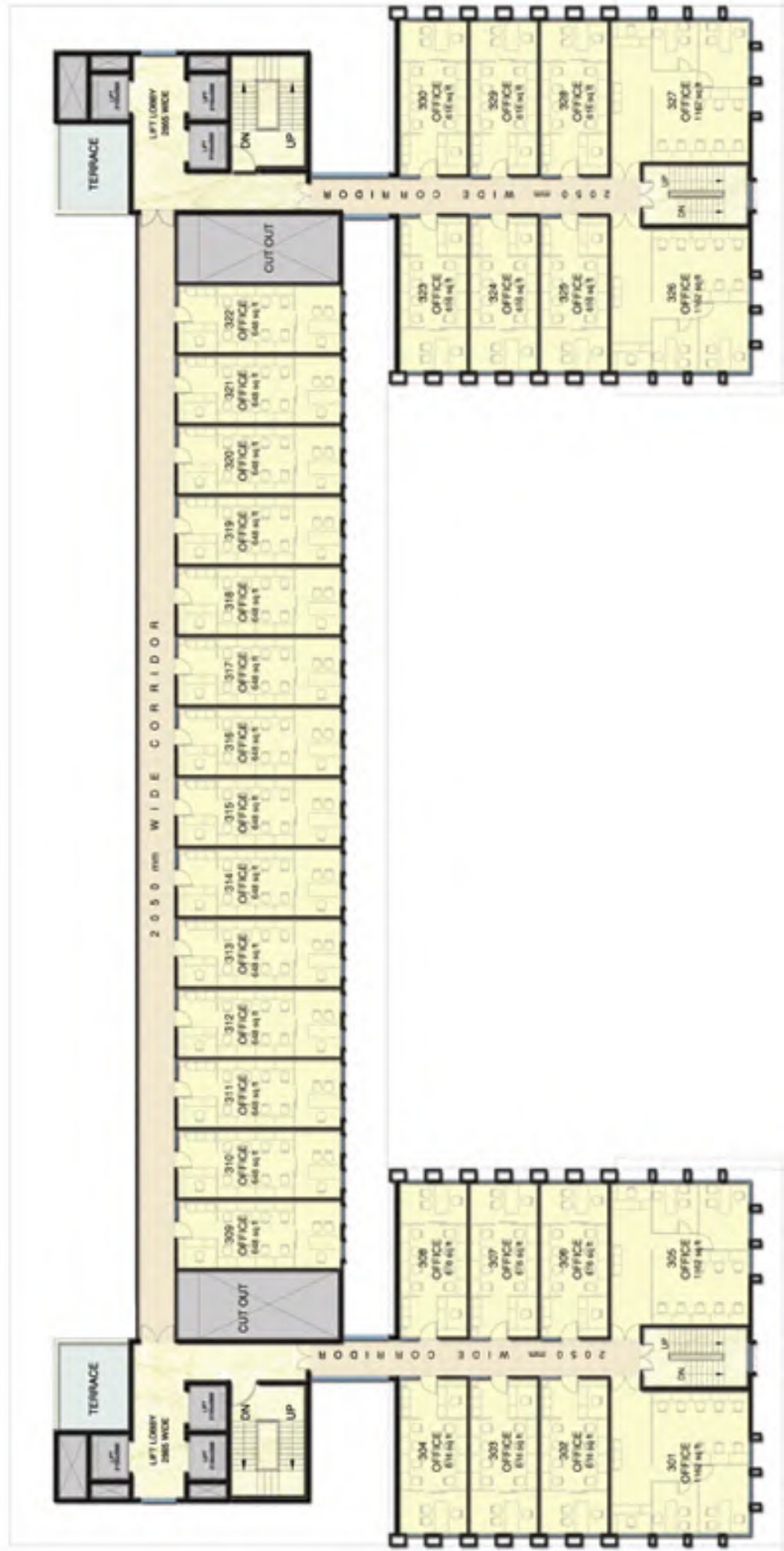
FIRST FLOOR PLAN



SECOND FLOOR PLAN



THIRD FLOOR PLAN







ABOUT BPTP

BPTP is the largest real estate company in Gurgaon-Faridabad-NOIDA market in terms of the number of apartments launched and sold, and the 3rd largest real estate development company in terms of the sq. ft. launched and sold.*

BPTP offers residential and commercial real estate products ranging from integrated townships, plotted development, group housing consisting of high rise and low rise apartments and villas to other commercial properties including district and convenience commercial and retail centres, IT and cyber parks and IT SEZs.

We intend to continue to focus on providing our customers with a superior home buying experience. With sustainable growth and high standards of corporate governance as the focus of our Company, we intend to build investor confidence. We have also attracted global investors like CPI, J.P. Morgan Chase Banks and Merrill Lynch to invest in the company.

*January 2005 to July 2009 (source: PropEquity)



PARK
CENTRAL



Marketing Office: BPTP Limited, 5th Floor, DCM Building, 16, Barakhamba Road, Connaught Place, New Delhi -110001 Tel. +91-11-3046 2787 / 4359 0000 Fax. +91-11-4151 3938
E-mail: commercial@bptp.com, SMS<BPTP> to 57575, Website: www.bptp.com

Disclaimer: "BPTP Limited proposes, subject to receipt of requisite approvals, market conditions and other considerations, to make an initial public offer of its equity shares and has filed a Draft Red Herring Prospectus ("DRHP") with the Securities and Exchange Board of India ("SEBI"). The DRHP is available on the website of SEBI at www.sebi.gov.in as well as on the websites of the book running lead managers at www.idfcSKI.com and www.jpmiPL.com. Investment in equity shares involves a high degree of risk and for details relating to the same, please refer to the section titled "Risk Factors" of the DRHP. The equity shares of BPTP Limited have not been and will not be registered under the U.S. Securities Act 1933, as amended ("U.S. Securities Act"), or any state securities laws in the United States and may not be offered or sold in the United States, except pursuant to an exemption from, or in a transaction not subject to, the registration requirements of the U.S. Securities Act. This announcement has been prepared for publication in India and may not be released in the United States. This announcement does not constitute an offer for sale of securities in any jurisdiction, including the United States." BPTP Limited does not intend to register any portion of the offering in the United States or to conduct a public offering of equity shares or any other securities in the United States.

Architects and developers reserve the right to alter the specifications and facilities for design improvement. This brochure is purely conceptual & not a legal offering. The developer reserves the right to amend/ alter the area, layout, elevations, specifications & amenities. Elevation, photographs/ images used in the brochure are purely artistic in nature & tend to change with/ without prior notice."